

Copyright by The University of Chicago Medical Center. All rights reserved. No part of this publication may be reproduced without permission in writing from The University of Chicago Medical Center.

Disclaimer: Clinical pathways are designed to standardize care of patients based on publicly available medical evidence and/or consensus of medical professionals at The University of Chicago Medical Center (UCM). Clinical pathways are not meant to replace clinical judgment and patients should be managed accordingly, based on their individual needs. The application does not provide medical advice, does not make diagnostic, treatment, or other clinical decisions or judgments, and is not a substitute for the competent analysis and professional judgment of health care professionals. Clinical pathways may not represent the most recent evidence available. UCM is not responsible for any errors or omissions within the pathway or for any patient outcomes where a clinician consulted the pathway during patient care.

Pathway Contacts: Allison Bartlett, MD and Rachel Marrs, DNP, RN
QPI Contact: Joan Liput
Last Updated: 5/5/2020

Resources & Updates

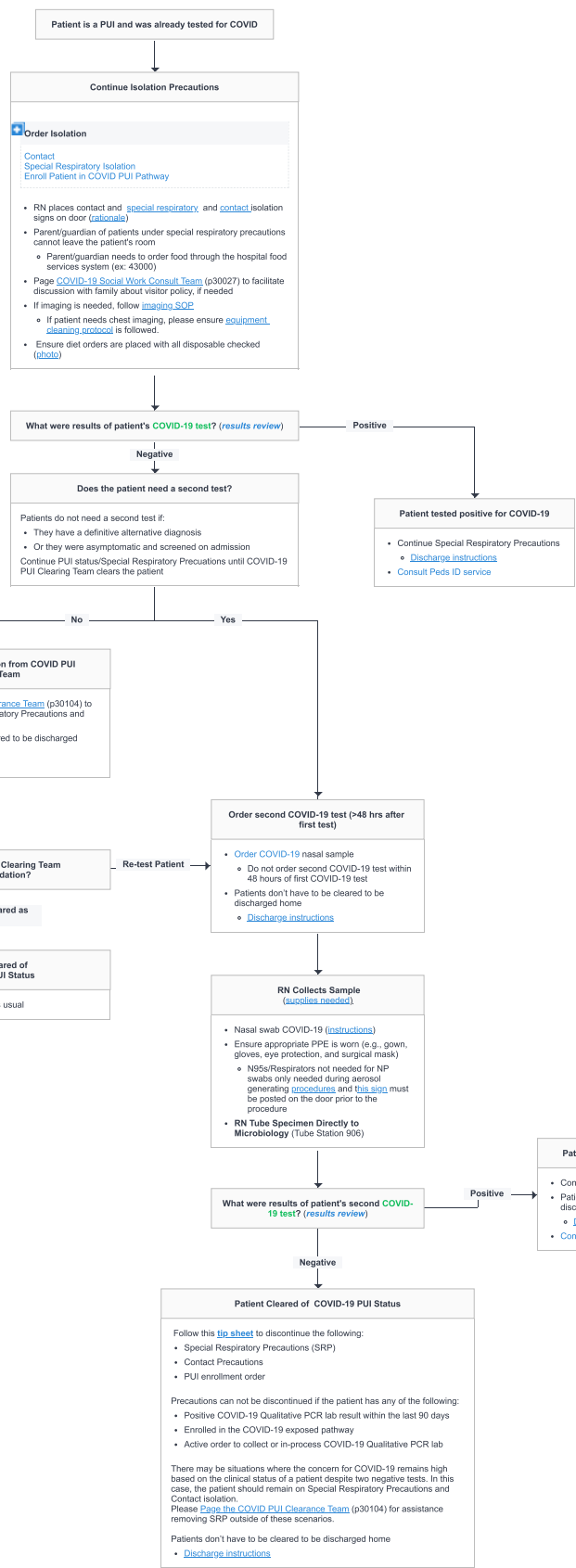
[UCM Coronavirus \(COVID-19\) Resource Center](#)
[UCM Video: How to don and doff Personal Protective Equipment \(PPE\)](#)

For clinical questions regarding the care of COVID PUIs or COVID patients, [page the COVID Resource Team](#) (p30028)

Recent Updates:

- 5/14/2020
 - Updated PUI clearing guidance
- 5/5/2020
 - Modified testing criteria to clarify that asymptomatic patients do not need a second test
- 4/16/2020:
 - Added step to contact the Peds ID service if patient tests positive for COVID
 - Added instructions for repeat testing if patient is COVID+ and requires prolonged hospitalization
 - Added sign to be posted prior to all AGPs

[\(archived updates\)](#)



Patient is a PUI and was already tested for COVID

Continue Isolation Precautions

- Order Isolation**
- Contact
 - Special Respiratory Isolation
 - Enroll Patient in COVID PUI Pathway
 - RN places contact and [special respiratory](#) and [contact](#) isolation signs on door ([rationale](#))
 - Parent/guardian of patients under special respiratory precautions cannot leave the patient's room
 - Parent/guardian needs to order food through the hospital food services system (ex: 43000)
 - Page [COVID-19 Social Work Consult Team](#) (p30027) to facilitate discussion with family about visitor policy, if needed
 - If imaging is needed, follow [imaging SOP](#)
 - If patient needs chest imaging, please ensure [equipment cleaning protocol](#) is followed.
 - Ensure diet orders are placed with all disposable checked ([rubbic](#))

What were results of patient's COVID-19 test? (results review)

Does the patient need a second test?

Patients do not need a second test if:

- They have a definitive alternative diagnosis
- Or they were asymptomatic and screened on admission

Continue PUI status/Special Respiratory Precautions until COVID-19 PUI Clearing Team clears the patient

Patient tested positive for COVID-19

- Continue Special Respiratory Precautions
 - [Discharge Instructions](#)
- Consult Peds ID service

Wait for Communication from COVID PUI Clearing Team

- Page [the COVID PUI Clearance Team](#) (p30104) to discontinue Special Respiratory Precautions and PUI status:

Patients don't have to be cleared to be discharged home

- [Discharge Instructions](#)

What is COVID PUI Clearing Team Recommendation?

Patient Cleared as PUI

Patient Cleared of COVID-19 PUI Status

Treat and discharge patient as usual

Order second COVID-19 test (>48 hrs after first test)

- Order COVID-19 nasal sample
 - Do not order second COVID-19 test within 48 hours of first COVID-19 test
- Patients don't have to be cleared to be discharged home
 - [Discharge Instructions](#)

RN Collects Sample (supplies needed)

- Nasal swab COVID-19 ([instructions](#))
- Ensure appropriate PPE is worn (e.g., gown, gloves, eye protection, and surgical mask)
 - N95s/Respirators not needed for NP swabs only needed during aerosol generating procedures and [this sign](#) must be posted on the door prior to the procedure
- RN Tube Specimen Directly to Microbiology (Tube Station 506)

What were results of patient's second COVID-19 test? (results review)

Patient tested positive for COVID-19

- Continue Special Respiratory Precautions
- Patients don't have to be cleared to be discharged home
 - [Discharge Instructions](#)
- Consult Peds ID service

Patient Cleared of COVID-19 PUI Status

Follow this [tip sheet](#) to discontinue the following:

- Special Respiratory Precautions (SRP)
- Contact Precautions
- PUI enrollment order

Precautions can not be discontinued if the patient has any of the following:

- Positive COVID-19 Qualitative PCR lab result within the last 90 days
- Enrolled in the COVID-19 exposed pathway
- Active order to collect or in-process COVID-19 Qualitative PCR lab

There may be situations where the concern for COVID-19 remains high based on the clinical status of a patient despite two negative tests. In this case, the patient should remain on Special Respiratory Precautions and Contact Isolation. Please [page the COVID PUI Clearance Team](#) (p30104) for assistance removing SRP outside of these scenarios.

Patients don't have to be cleared to be discharged home

- [Discharge Instructions](#)