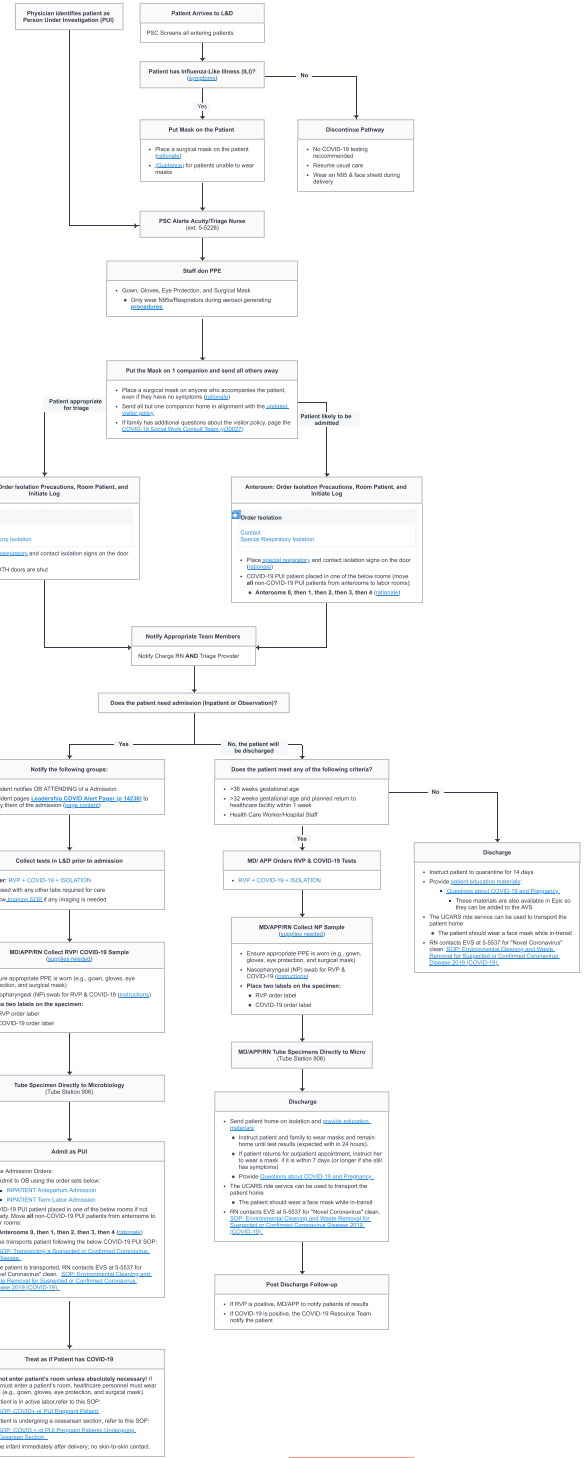


Copyright by The University of Chicago Medical Center. All rights reserved. No part of this publication may be reproduced or transmitted in any form or by any means without the prior written permission of the University of Chicago Medical Center.
Revisions: Original published on 12/18/2019 and updated on 04/20/2020. The University of Chicago Medical Center is not responsible for any errors or omissions with the permission of the copyright holder. Please contact the publisher for more information.
Pathway Contacts: Abhinav Khandelwal, MD, Allison Siefert, MD, and Rachel Morris, DNP, RN
QIP Contact: Joan Lipst
Last Updated: 4/20/2020

Resources & Updates
[Link to the COVID-19 Resource Center](#)
[Information for Health Care Workers and Support Staff](#)
[COVID-19 Resource Center](#)
[COVID-19 Patient Care and Prevention](#)
[Employee PPE](#)
[PPE Risk Assessment & Transfer Between Areas](#)
[PPE Storage](#)
[PPE Use](#)
[PPE Use](#)
For clinical questions regarding the care of COVID-19 PUI or COVID-19 patients, [Email COVID-19 Resource Team](#) or [Text](#)
Recent updates:
• 4/19/20
• Added testing for discharge patients that are >12 weeks gestational age and planned return to healthcare facility for 1 week
• Bathed infant as soon as possible; no skin-to-skin < 48/24
• Added link to SOP for Dr. Dick Response and Transition Between ED and L&D to Resource Section
• Added link to Cover Call 1 Usage for PUI/COVID-19 Risk to Resource Section
[Contact Us](#)



Informational: NCU visitation for COVID-19 patient
COVID-19 positive patients can visit their baby in the NICU when ALL OF THE FOLLOWING are met:
• Active without symptoms for 72 hrs AND
• Improvement (not full resolution) of respiratory symptoms AND
• Two consecutive negative COVID-19 tests at least 24 hr apart

